

An aerial photograph of a city with a river winding through it. The image is overlaid with various colored areas: a large purple area along the river, several green areas scattered throughout the city, and a yellow area in the upper right. The text 'EAST SIDE' is prominently displayed in the center in a large, bold, blue font.




EAST SIDE

IMPACT ANALYSIS

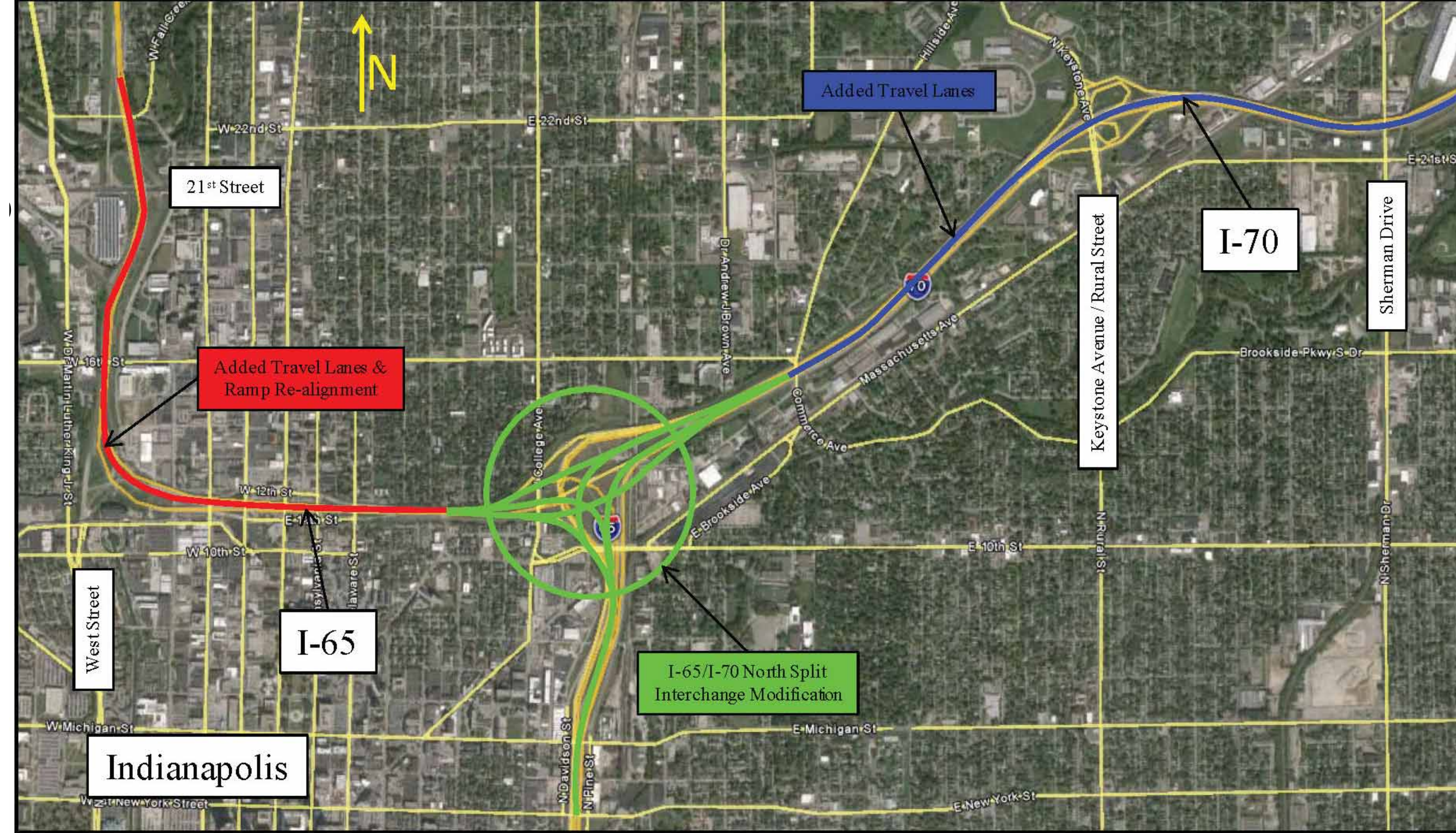
INDOT INTERSTATE PROJECTS

Heavy investment in a fifty-year-old central Indiana interstate system is in process, and unless redirected, will incrementally embed the system's inefficiencies and inequities for another half century.

The INDOT overall project is separated into three sections as shown in the location maps*:

-  I-65/70 North Junction bounded by Vermont Street, Central Avenue and Commerce Avenue (Des #1600808)
-  I-65 from Central Avenue to Fall Creek (Des #1600713)
-  I-70 from Commerce Avenue to I-465 East Leg (Des #1600712)

*From "Project Intent Report", Revision July 18, 2016, INDOT



INDOT

CURRENT PROJECT

50 -year impact

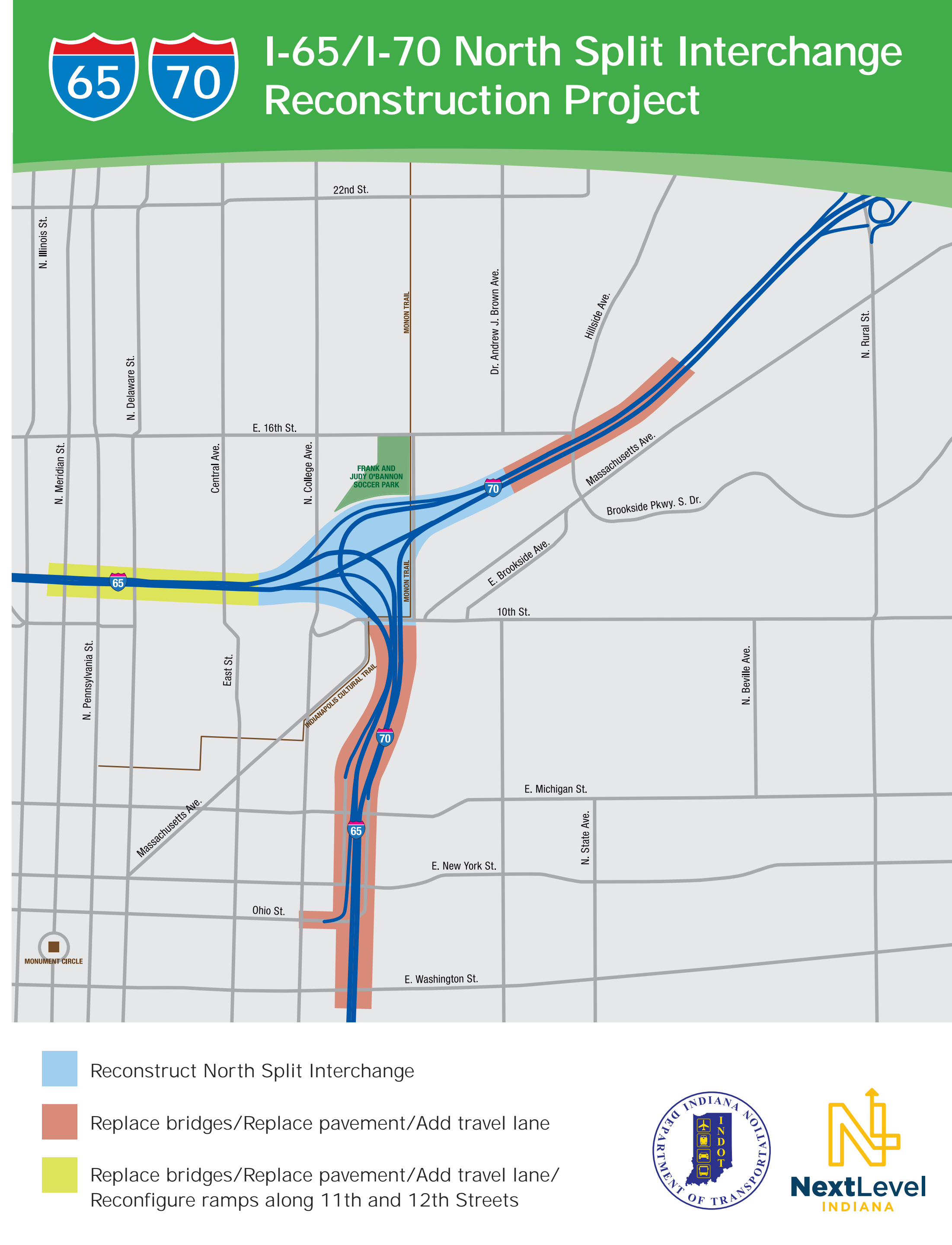
neighborhoods just beginning to recover from original interstate construction

Incremental - part of a larger project area

let's take the time to study alternatives and look at the big picture for all the projects

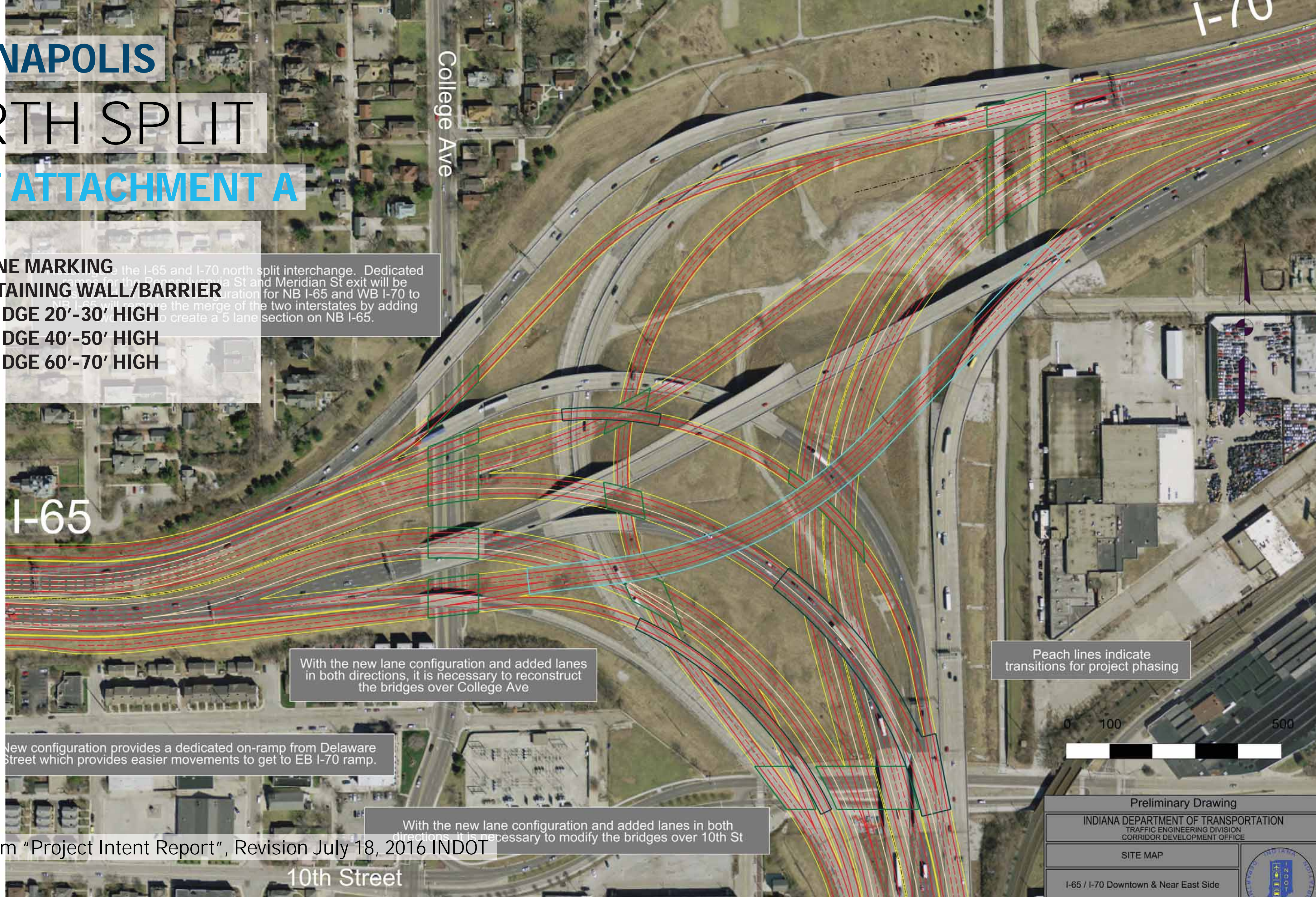
Added travel lanes

don't solve future congestion - we need a more forward-thinking solution that considers autonomous vehicles, transit and logistics traffic



INDIANAPOLIS NORTH SPLIT INDOT ATTACHMENT A

- LANE MARKING
- RETAINING WALL/BARRIER
- BRIDGE 20'-30' HIGH
- BRIDGE 40'-50' HIGH
- BRIDGE 60'-70' HIGH



the I-65 and I-70 north split interchange. Dedicated lanes for the Pennsylvania St and Meridian St exit will be provided for NB I-65 and WB I-70 to create a 5 lane section on NB I-65.

With the new lane configuration and added lanes in both directions, it is necessary to reconstruct the bridges over College Ave

Peach lines indicate transitions for project phasing

New configuration provides a dedicated on-ramp from Delaware Street which provides easier movements to get to EB I-70 ramp.

With the new lane configuration and added lanes in both directions, it is necessary to modify the bridges over 10th St

*Drawing from "Project Intent Report", Revision July 18, 2016 INDOT

Preliminary Drawing
 INDIANA DEPARTMENT OF TRANSPORTATION
 TRAFFIC ENGINEERING DIVISION
 CORRIDOR DEVELOPMENT OFFICE

SITE MAP

I-65 / I-70 Downtown & Near East Side

INDIANAPOLIS

NORTH SPLIT

INDOT ATTACHMENT A

SCALE	STRUCTURE NO.	INDOT	
N/A	N/A		
DES. NO.	PROJECT NO.	DATE	PAGE
N/A	N/A	2-23-2016	N/A

- █ LANE MARKING
- █ RETAINING WALL/BARRIER
- █ BRIDGE 20'-30' HIGH
- █ BRIDGE 40'-50' HIGH
- █ BRIDGE 60'-70' HIGH

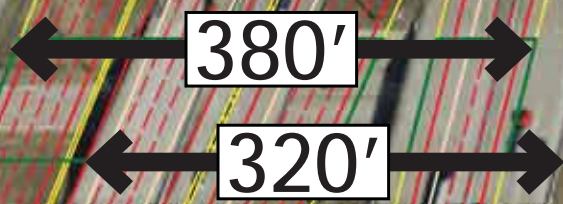
Attachment A: I-65/70 North Split

College Ave

St Clair St

I-65/I-70

Pogues Run



With the new lane configuration and added lanes in both directions, it is necessary to modify the bridges over St. Clair St

Peach lines indicate transitions for project phasing

*Drawing from "Project Intent Report", Revision July 18, 2016 INDOT

INDIANAPOLIS

NORTH SPLIT

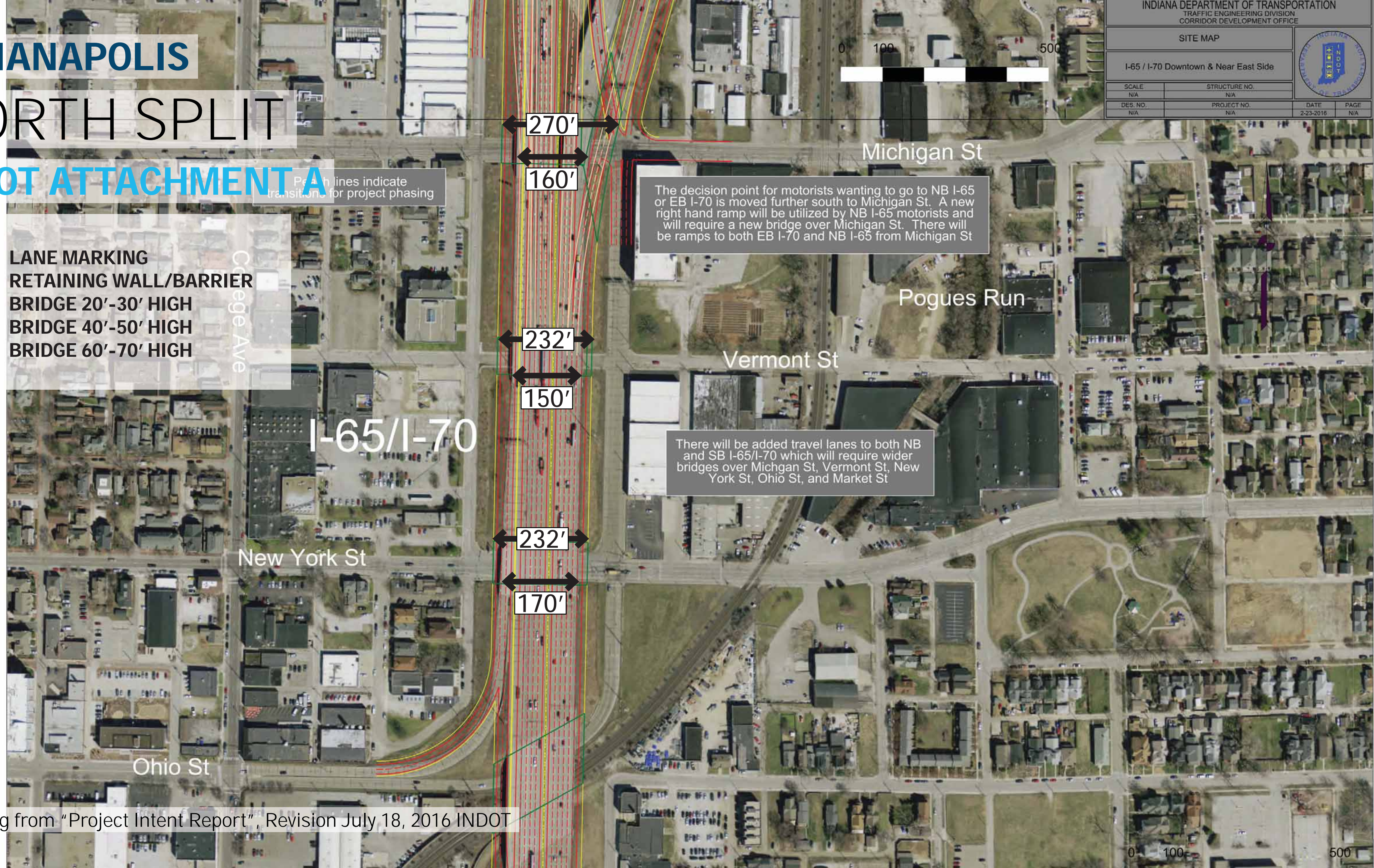
INDOT ATTACHMENT A

Peak lines indicate transitions for project phasing

- LANE MARKING
- RETAINING WALL/BARRIER
- BRIDGE 20'-30' HIGH
- BRIDGE 40'-50' HIGH
- BRIDGE 60'-70' HIGH

Attachment A: I-65/70 North Split

INDIANA DEPARTMENT OF TRANSPORTATION TRAFFIC ENGINEERING DIVISION CORRIDOR DEVELOPMENT OFFICE			
SITE MAP			
I-65 / I-70 Downtown & Near East Side			
SCALE	STRUCTURE NO.		
N/A	N/A		
DES. NO.	PROJECT NO.	DATE	PAGE
N/A	N/A	2-23-2016	N/A

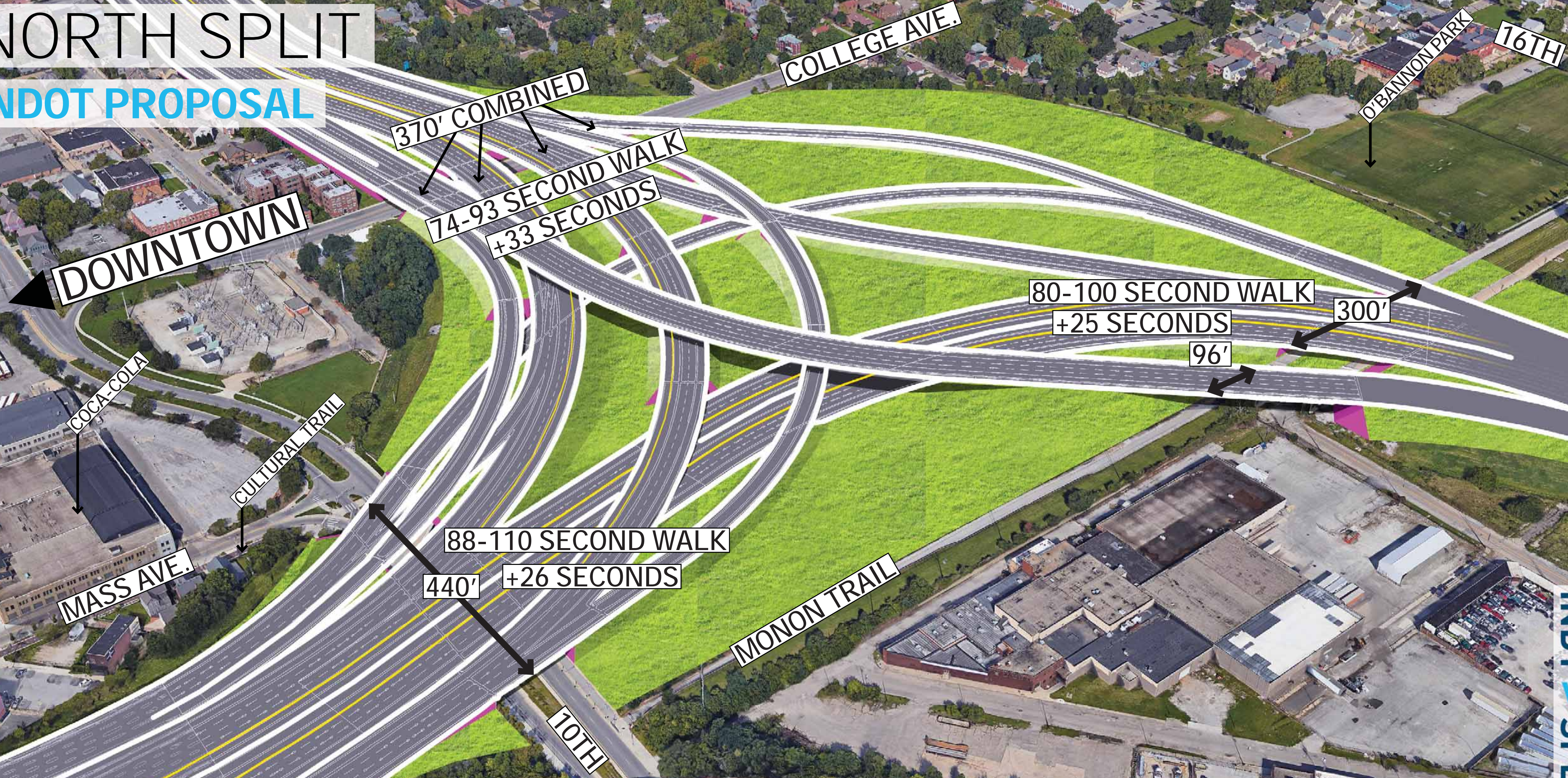


The decision point for motorists wanting to go to NB I-65 or EB I-70 is moved further south to Michigan St. A new right hand ramp will be utilized by NB I-65 motorists and will require a new bridge over Michigan St. There will be ramps to both EB I-70 and NB I-65 from Michigan St

There will be added travel lanes to both NB and SB I-65/I-70 which will require wider bridges over Michigan St, Vermont St, New York St, Ohio St, and Market St

*Drawing from "Project Intent Report", Revision July 18, 2016 INDOT

INDIANAPOLIS NORTH SPLIT INDOT PROPOSAL



*This illustration is an interpretation of INDOT's plan. Source: "Project Intent Report", Revision July 18, 2016 INDOT

INDIANAPOLIS

NORTH SPLIT

EXISTING

COLLEGE AVE.

MASS AVE.

COCA-COLA

INDY READS

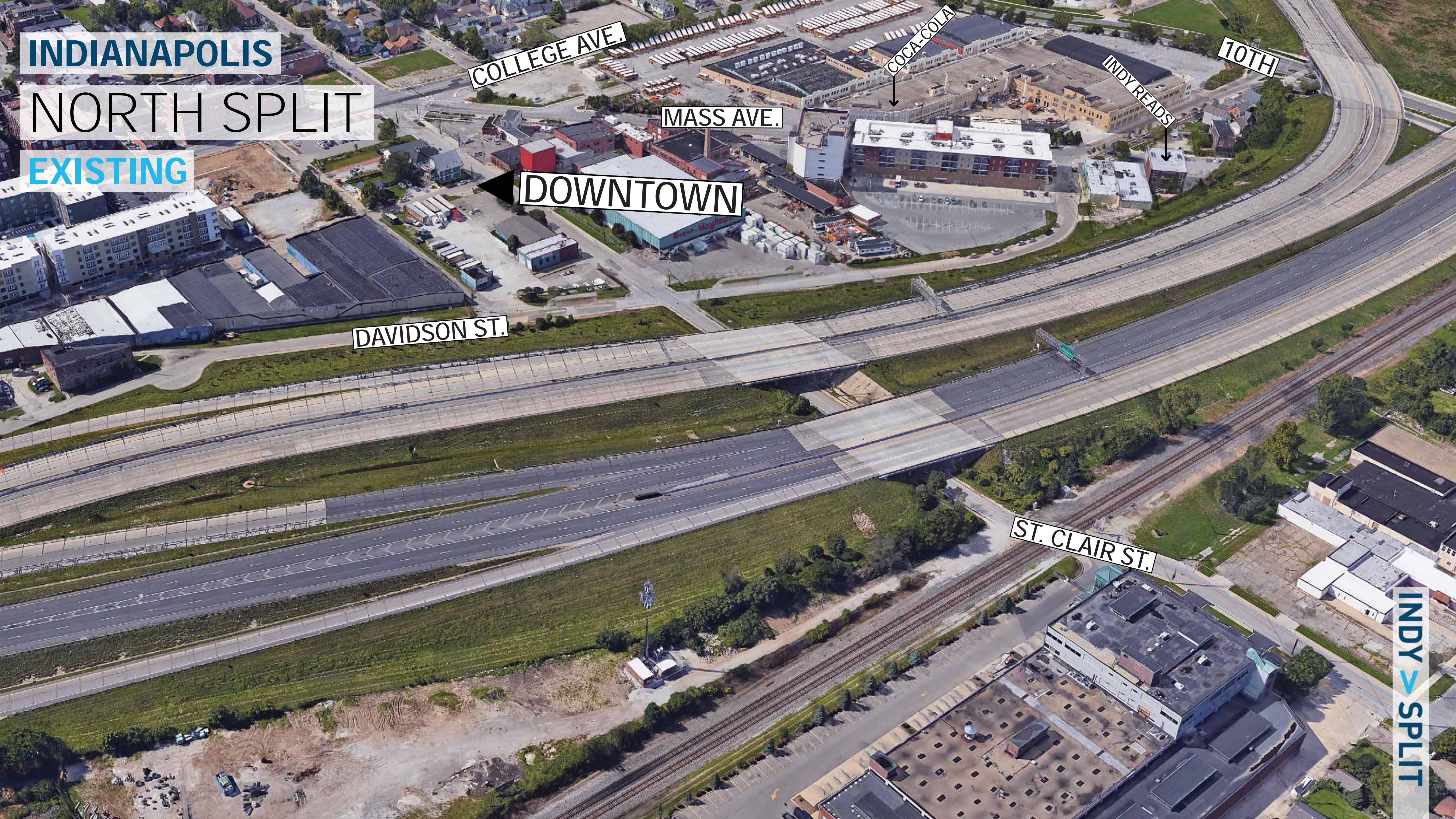
10TH

← DOWNTOWN

DAVIDSON ST.

ST. CLAIR ST.

INDY > SPLIT



INDIANAPOLIS

NORTH SPLIT

INDOT PROPOSAL

COLLEGE AVE.

COCA-COLA

10TH

INDY READS

MASS AVE.

DOWNTOWN

DAVIDSON ST.

ST. CLAIR ST.

INDY > SPLIT

*This illustration is an interpretation of INDOT's plan. Source: "Project Intent Report", Revision July 18, 2016 INDOT

INDIANAPOLIS

NORTH SPLIT

COMPARISON



COLLEGE AVE.

MASS AVE.

COCA-COLA

INDY READS

10TH

DOWNTOWN

DAVIDSON ST.

380'

320'

ST. CLAIR ST.

INDY > SPLIT

*This illustration is an interpretation of INDOT's plan. Source: "Project Intent Report", Revision July 18, 2016 INDOT

INDIANAPOLIS

NORTH SPLIT

EXISTING

DOWNTOWN

COLLEGE AVE.

DAVIDSON ST.

MICHIGAN ST.

NEW YORK ST.

PINE ST.

VERMONT ST.

MIDLAND ANTIQUES

INDY > SPLIT



INDIANAPOLIS

NORTH SPLIT

INDOT PROPOSAL

DOWNTOWN

COLLEGE AVE.

MICHIGAN ST.

DAVIDSON ST.

NEW YORK ST.

PINE ST.

VERMONT ST.

MIDLAND ANTIQUES

INDY > SPLIT

*This illustration is an interpretation of INDOT's plan. Source: "Project Intent Report", Revision July 18, 2016 INDOT

INDIANAPOLIS

NORTH SPLIT

COMPARISON

DOWNTOWN

COLLEGE AVE.

MICHIGAN ST.

DAVIDSON ST.

NEW YORK ST.

PINE ST.

VERMONT ST.

MIDLAND ANTIQUES

170'

232'

150'

232'

160'

270'

INDY > SPLIT

*This illustration is an interpretation of INDOT's plan. Source: "Project Intent Report", Revision July 18, 2016 INDOT

INDIANAPOLIS
NORTH SPLIT
BEFORE - DAVIDSON ST. BETWEEN MASS AVE. & ST. CLAIR



INDIANAPOLIS

NORTH SPLIT

AFTER - DAVIDSON ST. BETWEEN MASS AVE. & ST. CLAIR



*This illustration is an interpretation of INDOT's plan. Source: "Project Intent Report", Revision July 18, 2016 INDOT

INDIANAPOLIS

NORTH SPLIT

BEFORE - DAVIDSON ST. BETWEEN MICHIGAN & VERMONT



INDIANAPOLIS NORTH SPLIT AFTER - DAVIDSON ST. BETWEEN MICHIGAN & VERMONT



*This illustration is an interpretation of INDOT's plan. Source: "Project Intent Report", Revision July 18, 2016 INDOT

INDIANAPOLIS

NORTH SPLIT

BEFORE - DAVIDSON ST. BETWEEN NEW YORK & OHIO



INDIANAPOLIS

NORTH SPLIT

AFTER - DAVIDSON ST. BETWEEN NEW YORK & OHIO

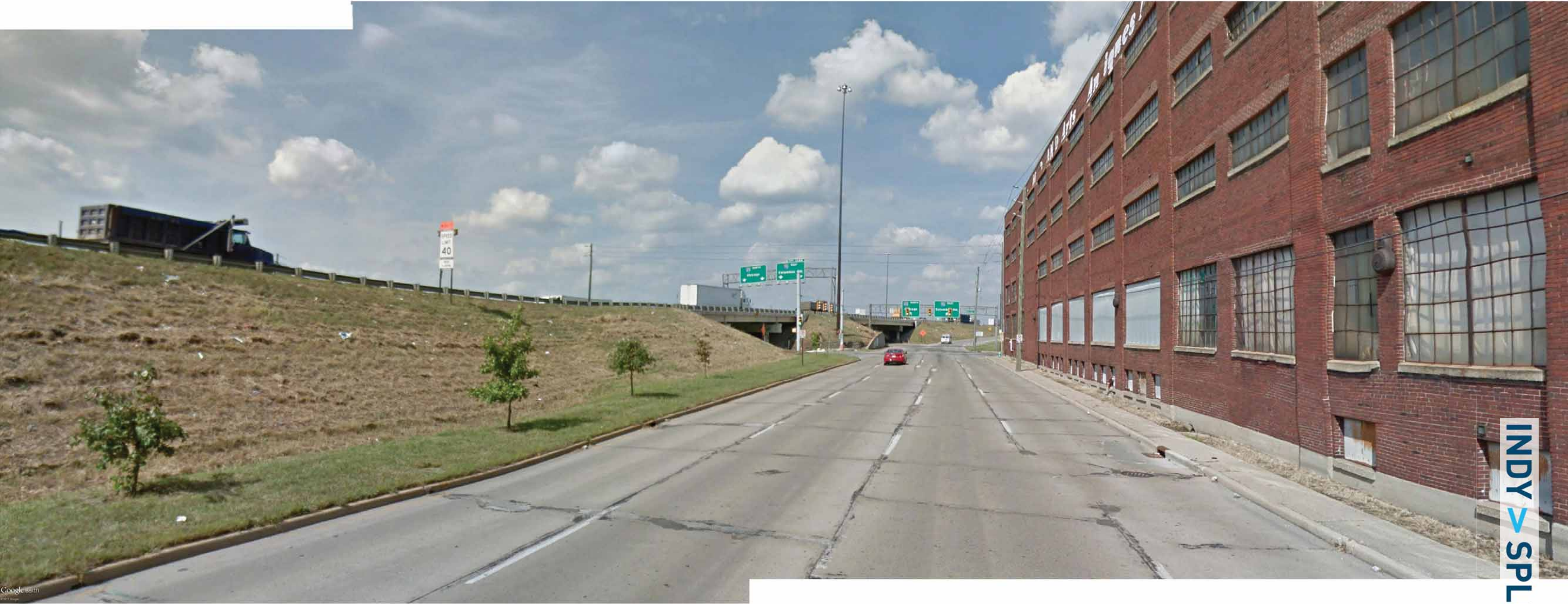


*This illustration is an interpretation of INDOT's plan. Source: "Project Intent Report", Revision July 18, 2016 INDOT

INDIANAPOLIS

NORTH SPLIT

BEFORE - PINE ST. BETWEEN MICHIGAN & VERMONT



INDIANAPOLIS NORTH SPLIT AFTER - PINE ST. BETWEEN MICHIGAN & VERMONT



*This illustration is an interpretation of INDOT's plan. Source: "Project Intent Report", Revision July 18, 2016 INDOT