

An aerial photograph of a city area, likely North Side, with a river winding through it. The map is overlaid with various colored areas: green, yellow, and purple. The text 'NORTH SIDE' is prominently displayed in the center in a large, bold, blue font. Below it, the words 'IMPACT ANALYSIS' are written in a smaller, black, sans-serif font. The background shows a dense urban grid, roads, and buildings.

NORTH SIDE

IMPACT ANALYSIS

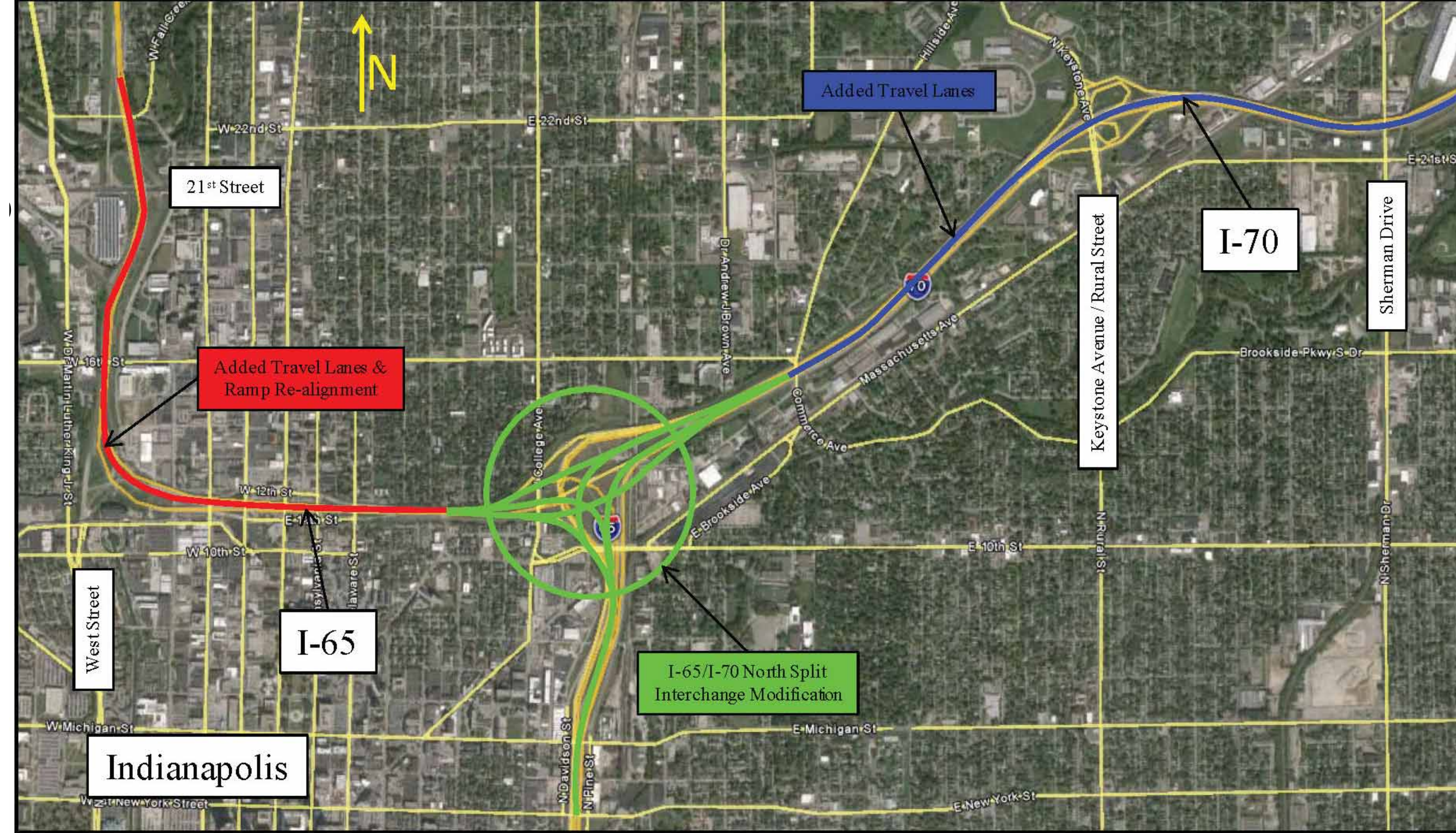
INDOT INTERSTATE PROJECTS

Heavy investment in a fifty-year-old central Indiana interstate system is in process, and unless redirected, will incrementally embed the system's inefficiencies and inequities for another half century.

The INDOT overall project is separated into three sections as shown in the location maps*:

- I-65/70 North Junction bounded by Vermont Street, Central Avenue and Commerce Avenue (Des #1600808)
- I-65 from Central Avenue to Fall Creek (Des #1600713)
- I-70 from Commerce Avenue to I-465 East Leg (Des #1600712)

*From "Project Intent Report", Revision July 18, 2016, INDOT



INDOT

CURRENT PROJECT

50 -year impact

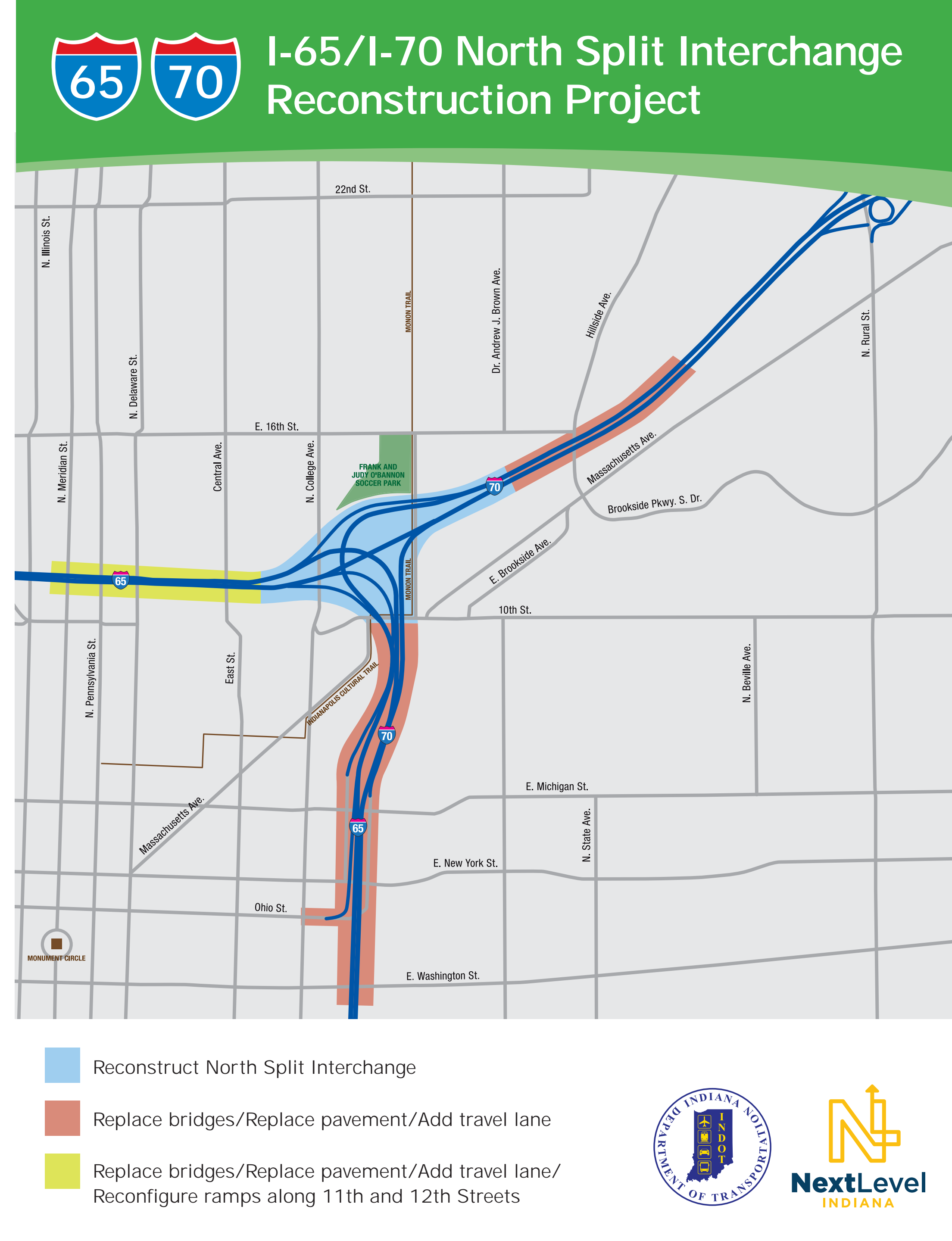
neighborhoods just beginning to recover from original interstate construction

Incremental - part of a larger project area

let's take the time to study alternatives and look at the big picture for all the projects

Added travel lanes

don't solve future congestion - we need a more forward-thinking solution that considers autonomous vehicles, transit and logistics traffic



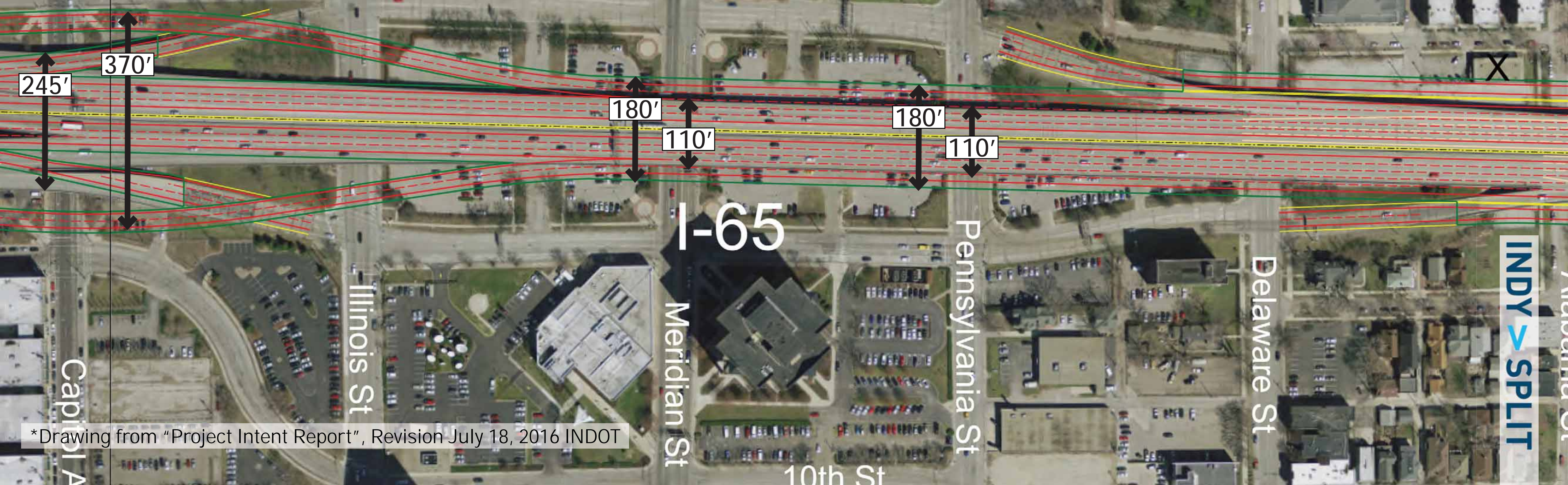
INDIANAPOLIS

NORTH SPLIT

INDOT ATTACHMENT A

- LANE MARKING
- RETAINING WALL/BARRIER
- BRIDGE 20'-30' HIGH
- BRIDGE 40'-50' HIGH
- BRIDGE 60'-70' HIGH

Added lanes to create a 5 lane section on NB I-65. Two of the five lanes exit to the right to go to West St and MLK St. Removes the existing movements from the left to the existing MLK St / West St exit. The added travel lanes and new ramp configuration will require widening of the large bridge over several local streets.



*Drawing from "Project Intent Report", Revision July 18, 2016 INDOT

INDIANAPOLIS

NORTH SPLIT

INDOT ATTACHMENT A

Reconfigure the I-65 and I-70 north split interchanges for the Pennsylvania St and Meridian St. The new configuration for NB I-65 will remove the merge of the two lanes to create a 5 lane section.

- LANE MARKING
- RETAINING WALL/BARRIER
- BRIDGE 20'-30' HIGH
- BRIDGE 40'-50' HIGH
- BRIDGE 60'-70' HIGH

Peach lines indicate transitions for project phasing

I-65

260'

150'

245'

134'

Delaware St

Alabama St

INDY > SPLIT

*Drawing from "Project Intent Report", Revision July 18, 2016 INDOT

New configuration provides a dedicated on-ramp from Delaware St which provides easier movements to I-65 to E

INDIANAPOLIS

NORTH SPLIT

INDOT ATTACHMENT A

Reconfigure the I-65 and I-70 north split interchange. Dedicated ramps for the Pennsylvania St and Meridian St exit will be constructed. The new configuration for NB I-65 and WB I-70 to NB I-65 will remove the merge of the two interstates by adding additional lanes to create a 5 lane section on NB I-65.

- LANE MARKING
- RETAINING WALL/BARRIER
- BRIDGE 20'-30' HIGH
- BRIDGE 40'-50' HIGH
- BRIDGE 60'-70' HIGH

I-65

With the new lane configuration and added lanes in both directions, it is necessary to reconstruct the bridges over College Ave

New configuration provides a dedicated on-ramp from Delaware Street which provides easier movements to get to EB I-70 ramp.

*Drawing from "Project Intent Report", Revision July 18, 2016 INDOT

INDY > SPLIT

INDY > SPLIT

INDIANAPOLIS

NORTH SPLIT

INDOT ATTACHMENT D

- LANE MARKING
- RETAINING WALL/BARRIER
- BRIDGE 20'-30' HIGH
- BRIDGE 40'-50' HIGH
- BRIDGE 60'-70' HIGH

NOTES:
EASTERN EXIT/ENTRANCE RAMPS
AT GRADE

Added lanes to create a 5 lane section on NB I-65. Two of the five lanes exit to the right to go to West St and MLK St. Removes the existing movements from the left to the existing MLK St / West St exit. The added travel lanes and new ramp configuration will require widening of the large bridge over several local streets.



*Drawing from "Project Intent Report", Revision July 18, 2016 INDOT

INDIANAPOLIS

NORTH SPLIT

INDOT ATTACHMENT D

- LANE MARKING
- RETAINING WALL/BARRIER
- BRIDGE 20'-30' HIGH
- BRIDGE 40'-50' HIGH
- BRIDGE 60'-70' HIGH

NOTES:
EXIT/ENTRANCE RAMPS AT GRADE

Peach lines indicate transitions for project phasing

Reconfigure the I-65 and I-70 north split interchanges for the Pennsylvania St and Meridian St. The new configuration for NB I-65 will remove the merge of the two interchanges and create a 5 lane section.

I-65

260'

150'

240'

134'

Delaware St

Alabama St

Central Ave

INDY > SPLIT

New configuration provides a dedicated on-ramp from Delaware St which provides easier movements to and from I-65.

*Drawing from "Project Intent Report", Revision July 18, 2016 INDOT

New configuration provides a dedicated on-ramp from Delaware St

INDIANAPOLIS

NORTH SPLIT

INDOT ATTACHMENT D

Reconfigure the I-65 and I-70 north split interchange. Dedicated ramps for the Pennsylvania St and Meridian St exit will be constructed. The new configuration for NB I-65 and WB I-70 to NB I-65 will remove the merge of the two interstates by adding two parallel lanes in each direction on NB I-65.

- LANE MARKING
- RETAINING WALL/BARRIER
- BRIDGE 20'-30' HIGH
- BRIDGE 40'-50' HIGH
- BRIDGE 60'-70' HIGH

NOTES:
WESTERN EXIT RAMP AT GRADE

Peach lines indicate transitions for project phase

Monon Trail

INDY > SPLIT

With the new lane configuration and added lanes in both directions, it is necessary to reconstruct the bridges over College Ave

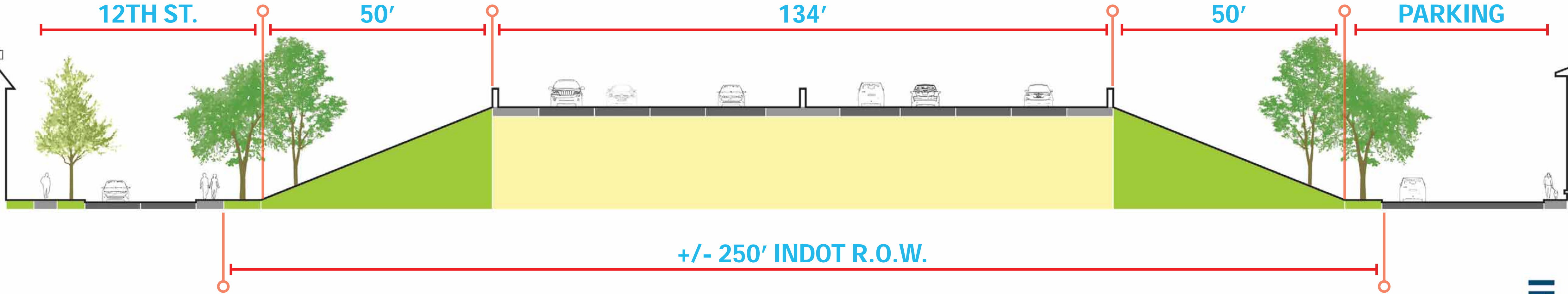
New configuration provides a dedicated on-ramp from Delaware Street which provides easier movements to get to EB I-70 ramp.

*Drawing from "Project Intent Report", Revision July 18, 2016 INDOT

INDIANAPOLIS

NORTH SPLIT

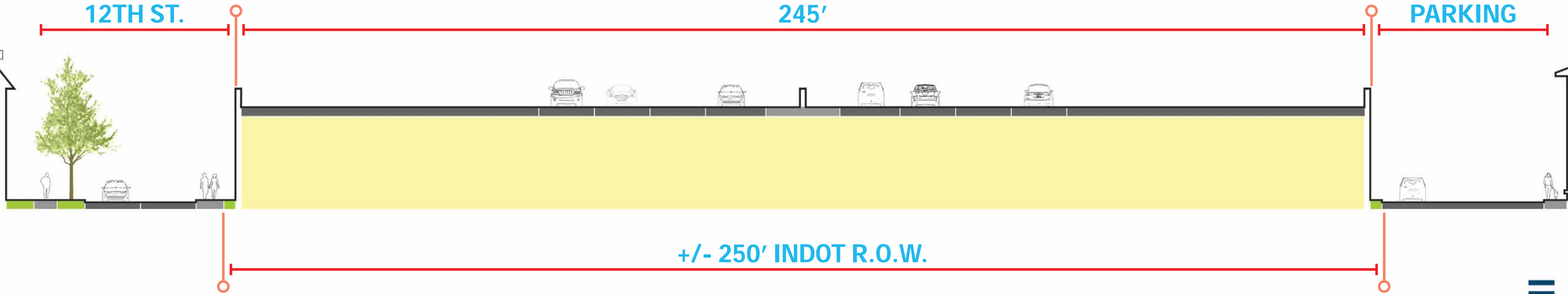
EXISTING BETWEEN PENN & COLLEGE



INDIANAPOLIS

NORTH SPLIT

INDOT PROPOSAL 'A' BETWEEN PENN & COLLEGE

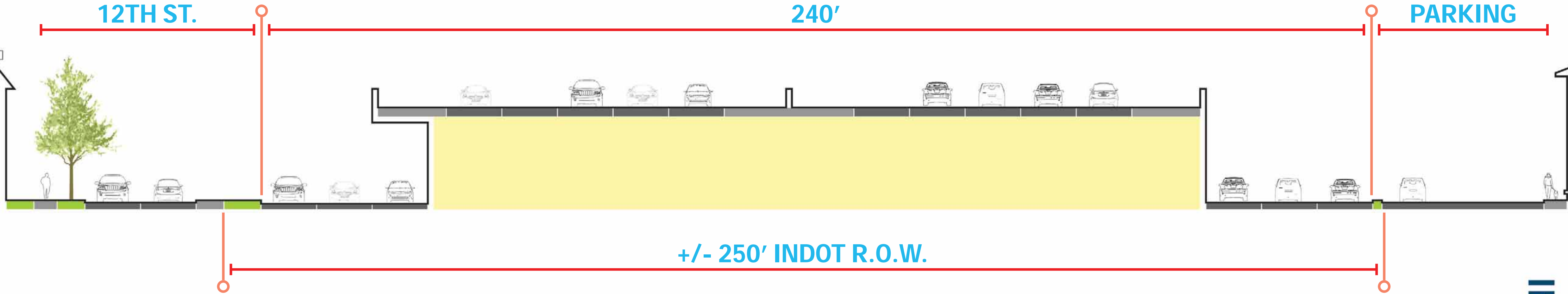


*This illustration is an interpretation of INDOT's plan. Source: "Project Intent Report", Revision July 18, 2016 INDOT

INDIANAPOLIS

NORTH SPLIT

INDOT PROPOSAL 'D' BETWEEN PENN & COLLEGE



*This illustration is an interpretation of INDOT's plan. Source: "Project Intent Report", Revision July 18, 2016 INDOT

INDIANAPOLIS

NORTH SPLIT

EXISTING

12TH ST.

INDIANA LANDMARKS

BUTLER HOUSE

DOWNTOWN

CENTRAL

ALABAMA

INDY > SPLIT



INDIANAPOLIS

NORTH SPLIT

INDOT PROPOSAL



*This illustration is an interpretation of INDOT's plan. Source: "Project Intent Report", Revision July 18, 2016 INDOT

INDY > SPLIT

INDIANAPOLIS

NORTH SPLIT

COMPARISON



INDIANA LANDMARKS

BUTLER HOUSE

12TH ST.

134'

245'

CENTRAL

DOWNTOWN

ALABAMA

INDY > SPLIT

*This illustration is an interpretation of INDOT's plan. Source: "Project Intent Report", Revision July 18, 2016 INDOT

INDIANAPOLIS

NORTH SPLIT

EXISTING

ALABAMA

DOWNTOWN

CENTRAL

12TH ST.

INDIANA LANDMARKS

INDY > SPLIT



INDIANAPOLIS

NORTH SPLIT

INDOT PROPOSAL

ALABAMA

DOWNTOWN

CENTRAL

12TH ST.

INDIANA LANDMARKS

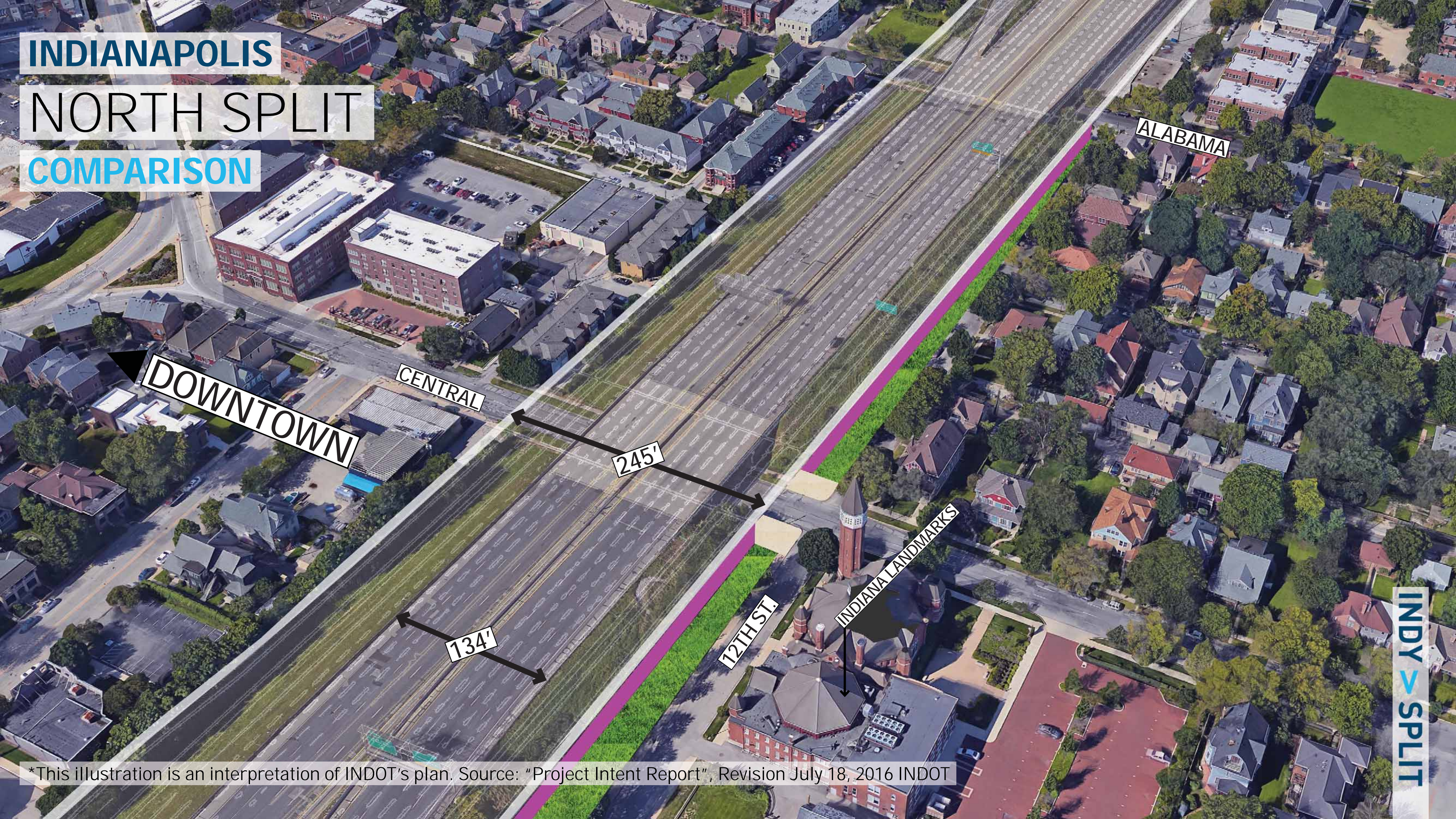
INDY > SPLIT

*This illustration is an interpretation of INDOT's plan. Source: "Project Intent Report", Revision July 18, 2016 INDOT

INDIANAPOLIS

NORTH SPLIT

COMPARISON



DOWNTOWN

CENTRAL

ALABAMA

245'

134'

12TH ST.

INDIANA LANDMARKS

*This illustration is an interpretation of INDOT's plan. Source: "Project Intent Report", Revision July 18, 2016 INDOT

INDIANAPOLIS
NORTH SPLIT
BEFORE - 12TH & ALABAMA



INDIANAPOLIS

NORTH SPLIT

AFTER - 12TH & ALABAMA



*This illustration is an interpretation of INDOT's plan. Source: "Project Intent Report", Revision July 18, 2016 INDOT

INDIANAPOLIS
NORTH SPLIT
BEFORE - 12TH & CENTRAL



INDIANAPOLIS NORTH SPLIT AFTER - 12TH & CENTRAL



*This illustration is an interpretation of INDOT's plan. Source: "Project Intent Report", Revision July 18, 2016 INDOT

INDIANAPOLIS
NORTH SPLIT
BEFORE - 11TH & PECK



INDIANAPOLIS NORTH SPLIT AFTER - 11TH & PECK



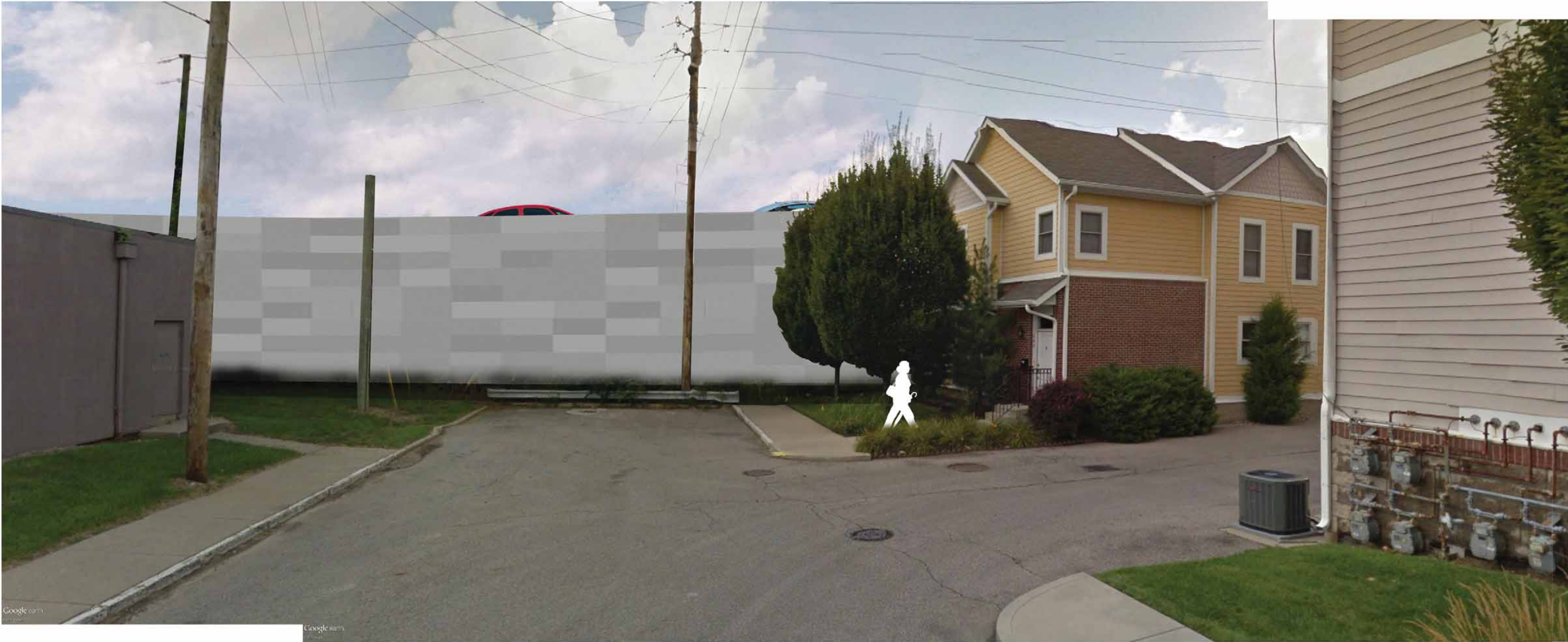
*This illustration is an interpretation of INDOT's plan. Source: "Project Intent Report", Revision July 18, 2016 INDOT

INDIANAPOLIS
NORTH SPLIT
BEFORE - 11TH & PARK



INDY > SPLIT

INDIANAPOLIS NORTH SPLIT AFTER - 11TH & PARK



*This illustration is an interpretation of INDOT's plan. Source: "Project Intent Report", Revision July 18, 2016 INDOT